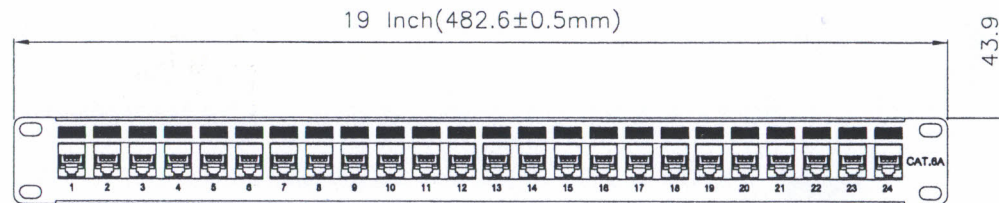
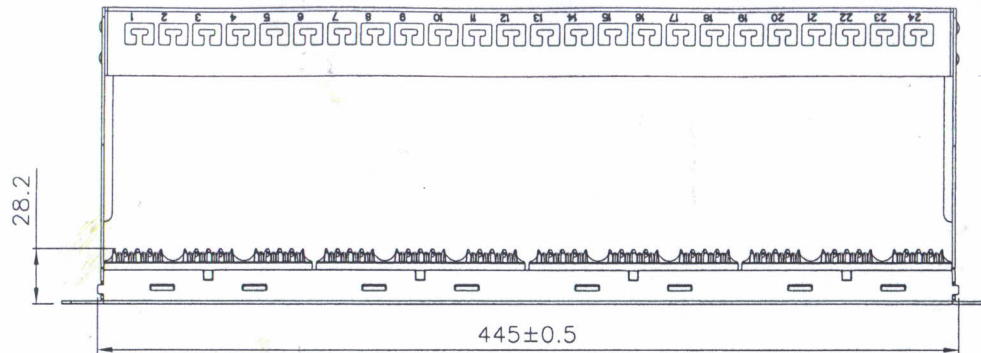
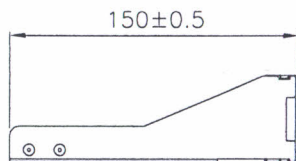


SCALE 1/4



Specifications :

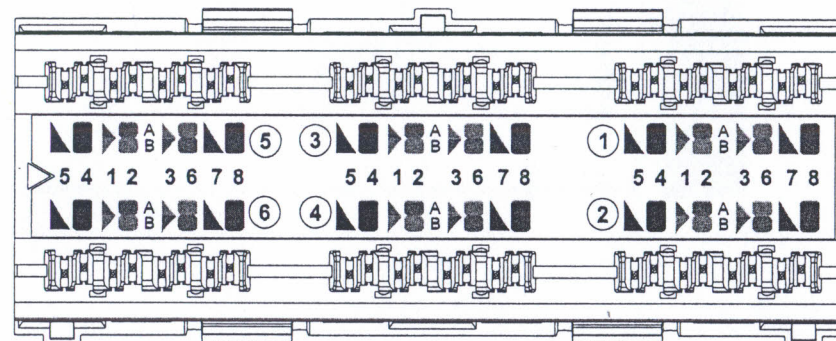
Material :

1. Front panel : SPCC, 1.5mm thickness, black(RAL 9005) color painting.
2. RJ45 jack :
 - 2-1. Housing : ABS+PC, UL94V-0.
 - 2-2. Jack : ABS+PC, UL94V-0.
 - 2-3. Shield : Brass with nickel plating.
 - 2-4. Contacts bracket : PC, UL94V-2, transparent color.
3. RJ45 jack contacts :
 - 3-1. Material : Phosphor bronze with nickel plating.
 - 3-2. Gold plating : 50 micro-inch gold plating on surface of plug contact area.
4. IDC :
 - 4-1. Housing : PC, UL94V-0.
 - 4-2. Terminals : Phosphor bronze with tin plating.
5. Support bar : SPCC, 1.5mm thickness, black (RAL 9005) color painting.
6. PCB : FR4, UL94V-0.

Features & performance :

- a. Compliant with the ANSI/TIA-568.2-D Cat.6A and IEC60512-99-002 4PPoE 100W requirement.
 - b. Compliant with the IEC60603-7 dimension & reliability requirement.
 - c. T568A & T568B wiring.
 - d. Mating & un-mating force: Max. 20 N.
 - e. Retention strength: 7.7 kg between jack & plug.
 - f. Operating temperature: -10°C to +60°C.
 - g. Life(mating cycles) :
 - * Jack : Min. 750 cycles.
 - * IDC : Suitable for 22-26 AWG stranded and solid wire. 22AWG: Max. 5 cycles, 23-26AWG: Min. 20 cycles.
 - h. Punch-down tool: 110 punch-down tool.
- Note: The mated plug should compliant with the IEC60603-7 requirement.

PCB MODULE INFORMATION



GENERAL TOLERANCE OF DIMENSIONS X.XXX ±0.1 X.XX ±0.2 X.X ±0.3	DRAWING	12.JUN.2022	CY				
	CHECK	12.JUN.2022	DAY				
	APPROVAL	12.JUN.2022	FRANK				
	DATE		NAME				
SCALE	1/1 (A4)	UNIT	mm	DES.: CAT.6A UTP CONNECTING HARDWARE			
DRAWING NO.							
DRAWING CLASSIFICATION		S	SHEET	1	OF	1	A2

